

# State of Wyoming Corner Record

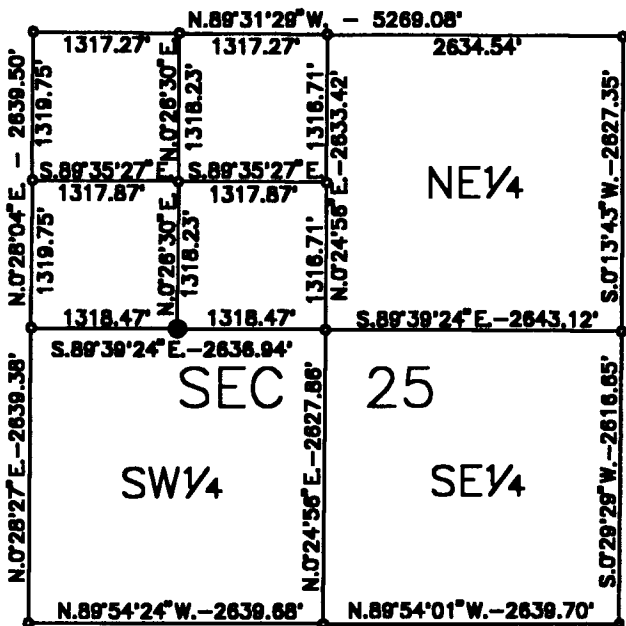
(In compliance with the *CORNER PERPETUATION AND FILING ACT*, Wyoming Statutes, 1977, Section 36-11-101, et. seq., and the Rules and Regulations of the Board of Registration for Professional Engineers and Professional Land Surveyors)

Reverse side of this form may be used if more space is needed.

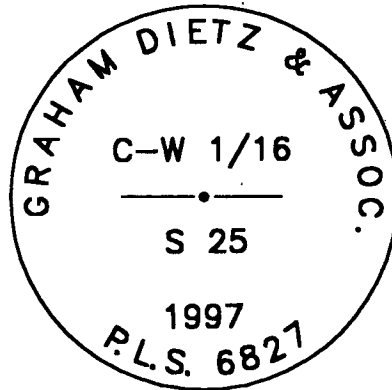
Record of original survey and citation of source of historical information (if corner is lost or obliterated). Description of corner monumentation evidence found and/or monument and accessories established to perpetuate the location of this corner. Sketch of relative location of monument, accessories, and reference points with course and distance to adjacent corner(s) (if determined in this survey). Method and rationale for reestablishment of lost or obliterated corner.

**Center West 1/16 Corner, Section 25, T.14N., R.61W., 6th P.M., Laramie County, Wyoming.**

**Set 5/8" X 24" rebar with 2 1/2" aluminum cap, 10" below ground surface, inscribed and located as shown below.**

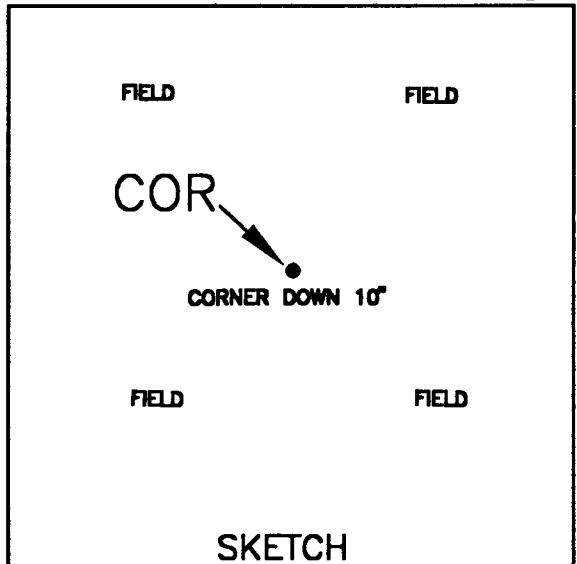


NOT TO SCALE



'97 MAR 24 AM 11 24  
 199787

LARAMIE COUNTY CLERK  
 CHEYENNE, WY.



N.T.S.

Date of Field Work: 2/25/97 Office Reference: \_\_\_\_\_

A	1	2	3	4	5	6	7	8	9	10	11	12	13	14	15	16	17	18	19	20	21	22	23	24	25	A	
B																											B
C	6	5	4	3	2	1																					C
D																											D
E																											E
F																											F
G	7	8	9	10	11	12																					G
H																											H
I																											I
J																											J
K																											K
L	18	17	16	15	14	13																					L
M																											M
N																											N
O																											O
P	19	20	21	22	23	24																					P
Q																											Q
R																											R
S																											S
T	30	29	28	27	26	25																					T
U																											U
V																											V
W																											W
X	31	32	33	34	35	36																					X
Y																											Y
Z	1	2	3	4	5	6	7	8	9	10	11	12	13	14	15	16	17	18	19	20	21	22	23	24	25	Z	

Firm/Agency, Address  
Graham, Dietz & Assoc.  
P.O. Box 338  
Cody, WY 82414

This corner record was prepared by me or under my direction and supervision.  
 SEAL & SIGNATURE

Telephone Number: (307) 587-3411



Corner Name: CENTER WEST 1/16 Section: 25 T 14 R 61 ; 6th P.M. Cross-Index No.: T-22  
 SBRPEPLS/PLSW: March 1994